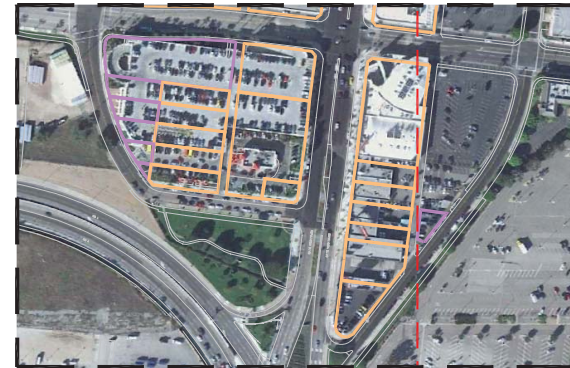


Inset 1



Inset 2



Source: Los Angeles International Airport ALP, Landrum & Brown, 2005; FAA Advisory Circular 150/5300-13; GIS Datasets and Mapping, PCR Services Corporation, 2002; Aerial Photography - Digital Globe, March 12, 2008 & U.S. Geological Survey, November 15, 2009; Ricondo & Associates, Inc.
 Prepared by: Ricondo & Associates, Inc.



**Parcels Inside Runway 24R Protection Zone
 Runway 6L-24R Shifted 400' North**

Drawing: Z:\LAW\LAX North Runway Alternatives\Parcels\CAD\400 North\Parcels Inside 24R RPZ_400 North.dwg_Layout: 300 North_Aug 12, 2010, 2:51pm